

BLACK KATZ

Management & Lettings



2 Bedroom Apartment To Rent In Borough / Elephant Castle £570 p.w. (£2470 pcm)

2 Bedroom Apartment To Rent In Borough / Elephant Castle£ 570 p.w. (£2470 pcm)

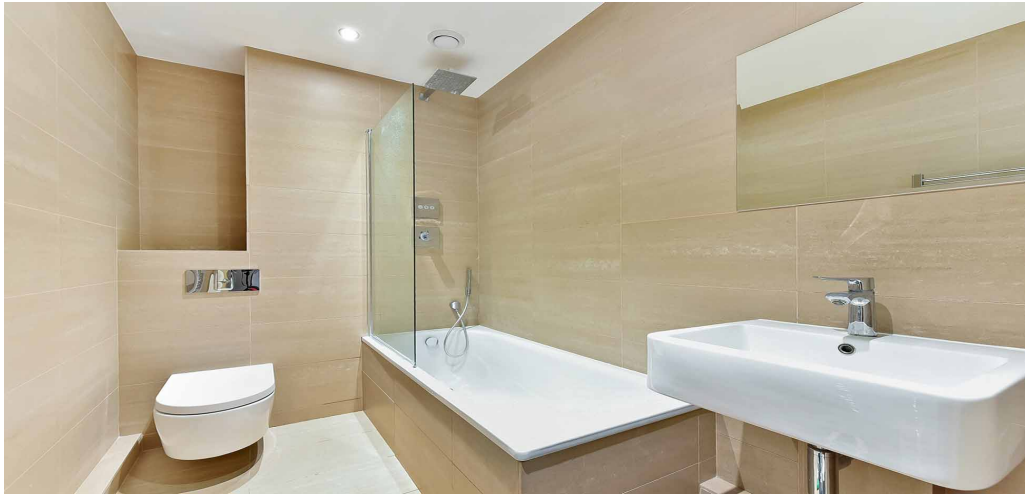
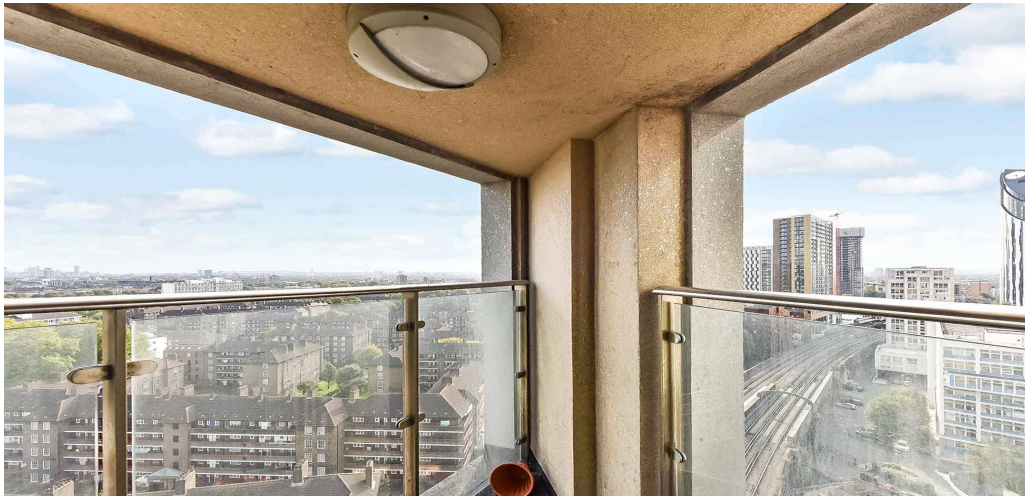
Available 4th June

Boasting slick lines, drenched in natural light, oak wooden floors throughout, spot lights, white walls, very good storage and beautiful balcony. This stunning apartment is located on the 12th floor of this amazing private modern development. This brand new development and truly stunning larger than average two double bed roomed apartment boasts stunning views of the London sky line. Stylish and contemporary and boasting approximately 660 Sq.ft or 61 Sq.mt of living and entertaining space. Floor to ceiling windows and gorgeous open plan kitchen reception room leading on to a stunning balcony. There are a further two enormous communal roof terraces located on the 16th and 19th floors with far reaching views of London and secure bicycle storage. This beautiful property is perfect for professionals or students. This apartment is superbly located to either Borough tube station (northern line) or Elephant and Castle tube and train station (Bakerloo line, Northern line or overground).

E.P.C. RATING: C

Property Features

. Roof Terrace . Balcony . Wood Floors . Washing Machine . Dishwasher . Luxury Appliances . Fitted Kitchen . Close to local amenities . Close to Tube . Fantastic Transport Links . Zone 1 . Open plan . Private Development . Double Glazed . Recently Decorated . Excellent decorative order . Spacious Living Room . Granite work surfaces . Floor to ceiling windows . Bicycle Storage



2 Bedroom Apartment To Rent In Borough / Elephant Castle£ 570 p.w. (£2470 pcm)



**78 Borough High Street
London Bridge
SE1 1LL**

**Manager: Alex Nunzi
Email: south@blackkatz.com
Tel: 020 7403 5010**

**Admin: Amy Burbridge
Email: amy.burbridge@blackkatz.com
m**

**Office Hours:
Mon-Fri 9.00am-7.00pm
Sat-10am-2.00pm
(Please call beforehand)**

We aim to make our particulars both accurate and reliable. However they are not guaranteed, nor do they form part of an offer or contract. If you require clarification on any points then please contact us. Please note that appliances and heating systems have not been tested and therefore no warranties can be given as to their good working order.